



Primary Care for America

# PrimaryCare22: *See the Possibilities*

## Event Program



Weds, May 25, 2022 from 1- 5pm ET  
Thurs, May 26, 2022 from 10 – 4pm ET



## Thank you to our sponsors:

### PrimaryCare22 Event Supported by:



### Primary Care for America Partners:

#### FOUNDING PARTNERS



#### CHAMPIONS



#### SUPPORTERS

Society of General Internal Medicine



### About Primary Care for America:

Primary Care for America is a diverse collaboration of key partners focused on educating policymakers and health policy influencers about the value of comprehensive, continuous and coordinated primary care. Its formation serves as a commitment to our continued effort to help improve the well-being of the individuals, families and communities that we proudly serve.



Sharing to Social Media  
during PrimaryCare22?

Use our hashtag!

# #PC22Event

And **tag** Primary Care for America:

twitter: @PC4America

linkedin: Primary Care for America

## Sessions schedule:

### DAY 1: WEDNESDAY MAY 25

- 1:00–1:45PM ET** **SESSION 1:** The State of Primary Care: An Interview with David Blumenthal, MD – *President, Commonwealth Fund*
- MODERATOR:** **Clive Fields, MD**, Chief Medical Officer and co-founder, VillageMD
- 
- 1:55–2:55PM ET** **SESSION 2:** The Value of Primary Care Across Lifespan
- MODERATOR:** **Ishani Ganguli, MD, MPH**, Assistant Professor of Medicine, Harvard
- PANELISTS:** **Eliana Perrin, MD, MPH**, John Hopkins University — **Jessica Leigh Colburn, MD**, Assistant Professor of Medicine, John Hopkins University
- 
- 3:00–4:10PM ET** **SESSION 3:** How Primary Care is Reducing Health Disparities
- MODERATOR:** **Kara Odom Walker, MD**, Executive Vice President & Chief Population Health Officer, Nemours
- PANELISTS:** **Dora Hughes, MD**, Chief Medical Officer, CMMI — **Roger Montgomery, MD**, Executive Medical Director, Cherokee Nation Health
- 
- 4:15–5:00PM ET** **SESSION 4:** Driving Innovation: The Centers for Medicare and Medicaid Services (CMS) or CMMI, An Interview with Elizabeth Fowler, PhD, JD, Director of Centers for Medicare & Medicaid Information (CMMI)
- MODERATOR:** **Sean Cavanaugh**, Chief Administrative and Performance Officer, Aledade

### DAY 2: THURSDAY MAY 26

- 10:00–10:55AM ET** **SESSION 5:** Primary Care Behavioral Health Integration Panel
- MODERATOR:** **Kristen Ratcliff McGovern**, Partner, Sirona Strategies

**PANELISTS:** **Lisa Harootunian, JD, MSW**, Associate Director, Health, Bipartisan Policy Center — **Adam Myers, MD**, Senior Vice President and Chief Clinical Transformation Officer, Blue Cross Blue Shield Association — **Faisel Syed, MD**, National Director of Primary Care, ChenMed

- 11:00–11:55AM ET** **SESSION 6:** Building the Primary Care Workforce
- MODERATOR:** **Stephanie Quinn**, Senior Vice President, Advocacy, Practice Advancement and Policy, American Academy of Family Physicians
- KEYNOTE SPEAKER:** **Candice Chen, MD**, Associate Professor, The George Washington University Milken Institute School of Public Health
- 
- 1:00–3:15PM ET** **SESSION 7:** Primary Care Innovation Showcase
- **Public Programs**
- MODERATOR:** **Shari Erickson**, Chief Advocacy Officer and Senior Vice President, American College of Physicians
- PANELISTS:** **Kameron Leigh Matthews, MD, JD, FAAFP**, Chief Health Officer of Cityblock Health — **Greg Gierer, MPP**, Vice President of Policy and Research, Better Medicare Alliance
- **Community Health Centers Panel**
- MODERATOR:** **Joe Dunn**, Senior Vice President, Public Policy and Research, National Association of Community Health Centers
- PANELISTS:** **Sonya Bruton, PsyD, MPA**, CEO and President, CCI Health Services — **Nancy Johnson RN, PhD**, CEO, El Rio Community Health Center
- **Employer & Cimmerical Models**
- MODERATOR:** **Jeff Micklos**, Executive Director, Health Care Transformation Task Force
- PANELISTS:** **Patrick Aguilar, MD**, Chief Medical Officer, MedWise & QuikTrip — **Bret Jackson**, President, The Economic Alliance for Michigan — **Jenny Goins**, President and CEO, Kentuckiana Health Collaborative
- 
- 3:15–4:00PM ET** **SESSION 8:** Where Do We Go—The Future of Primary Care
- KEYNOTE SPEAKER:** **Kyna Fong, PhD**, CEO and Co-Founder, Elation Health

# Session Speaker Information



1



## Session 1:

Wednesday May 25th, 1:00pm-1:45pm ET

### The State of Primary Care: An Interview with **David Blumenthal, MD** *President, Commonwealth Fund*

**Moderator: Clive Fields, MD**  
*Chief Medical Officer and Co-Founder, VillageMD*



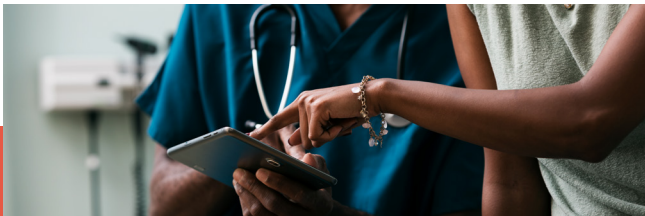
**David Blumenthal, MD, MPP**  
*President, Commonwealth Fund*

Dr. Blumenthal is President of the Commonwealth Fund. Previously, he served as Chief Health Information and Innovation Officer at Partners Health System and was Samuel O. Thier Professor of Medicine and Professor of Health Care Policy at Massachusetts General Hospital/Harvard Medical School. From 2009 to 2011, Dr. Blumenthal was the National Coordinator for Health Information Technology under President Barack Obama. As a renowned health services researcher and national authority on health IT adoption, he has authored over 300 scholarly publications, including the seminal studies on the adoption and use of health information technology in the United States.



**Clive Fields, MD**  
*Chief Medical Officer, VillageMD and President, Village Medical*

Dr. Clive Fields is the Chief Medical Officer and co-founder of VillageMD and is an esteemed practicing physician. Transforming the way patients and physicians experience health care in the early 1990s, prior to beginning VillageMD, Fields initiated and served as president of Village Family Practice, which became one of the largest primary care groups in Houston and was recognized for its quality of care by the Centers for Medicare and Medicaid Services (CMS) and the National Committee for Quality Assurance (NCQA). Fields was named to Modern Healthcare's 2020 List of the 50 Most Influential Clinical Executives.



## Session 2:

Wednesday May 25th, 1:55pm-2:55pm ET

### The Value of Primary Care Across Lifespan

**Moderator:** **Ishani Ganguli, MD, MPH**  
Assistant Professor of Medicine, Harvard

**Panelists:** **Eliana Perrin, MD, MPH**  
MPH John Hopkins University

**Jessica Leigh Colburn, MD**  
Assistant Professor of Medicine, John Hopkins University



**Ishani Ganguli, MD, MPH**  
Assistant Professor of Medicine, Harvard

Dr. Ganguli is an Assistant Professor of Medicine, health services researcher, and a practicing primary care physician at Harvard Medical School and Brigham and Women's Hospital. She received her AB, MD, and MPH from Harvard University and completed internal medicine/primary care residency and health policy and management fellowship at Massachusetts General Hospital. Her research focuses on the payment, delivery, and value of primary care, the use and consequences of low-value care, and gender equity. Dr. Ganguli serves as an Associate Editor at JAMA Network Open. She is also a former journalist who has written about science and health care for The Boston Globe, Reuters, The New York Times, and The Washington Post, among other publications.



**Eliana M. Perrin, MD, MPH**  
Professor of Primary Care in the Department of Pediatrics  
School of Medicine and the School of Nursing, Johns Hopkins University

Eliana M. Perrin, MD, MPH is a Bloomberg Distinguished Professor of Primary Care in the Department of Pediatrics in the School of Medicine and the School of Nursing at Johns Hopkins University. She has a joint appointment in the Bloomberg School of Public Health. Previously she has served as a Division Chief of Primary Care Pediatrics at Duke University and was the founding Director of the Duke Center for Childhood Obesity Research. She is a nationally-recognized leader in patient-oriented primary care, childhood obesity, and health disparities research. Perrin has developed, tested, and disseminated many tools to help pediatricians prevent and treat obesity. Perrin's research focuses on what pediatricians can do during well-child checks to support parents in helping children grow up healthy, and her groundbreaking work has had a broad impact on an epidemic that affects one in three children in the United States.

Perrin has spanned qualitative and quantitative methods and topics—from inflammatory markers in neonates to developing and testing color-coded growth charts and other materials to the influence of messages in children's movies—to understand the many facets of childhood obesity and health correlates, particularly focusing on disadvantaged communities. Perrin has co-created and co-led "Greenlight," a low-literacy primary care program to prevent obesity in young children, starting at infancy and focusing on dietary, physical activity, and screen time recommendations. This program's research has been tested through NIH R01s and a PCORI's Comparative Effectiveness Trial.

She is a fellow in the American Academy of Pediatrics, a member and former national research chair of the Academic Pediatrics Association, a member of the Society for Pediatric Research, and a member of the American Pediatric Society. She recently was named a member of the NAASEM Committee on the Pediatric Subspecialty Workforce.



**Jessica Colburn, MD**  
Assistant Professor, Geriatrics/GIM  
Johns Hopkins University School of Medicine

Dr. Jessica Colburn is Assistant Professor of Medicine in the Divisions of Geriatric Medicine and Gerontology and General Internal Medicine at Johns Hopkins University School of Medicine. She is a primary care geriatrician who works to improve the health of older adults by educating physicians, physicians in training, and other interdisciplinary trainees involved in providing primary care to older adults. She is the Director of the Johns Hopkins Geriatrics Workforce Enhancement Program, a HRSA funded initiative focused on improving primary care through geriatrics education and partnerships with primary care clinics that serve older adults. She also is the Program Director for the Johns Hopkins Geriatrics Fellowship Program, training future geriatricians to care for older adults living in the community.





## Session 3:

Wednesday May 25th, 3:00pm-4:10pm ET

### How Primary Care is Reducing Health Disparities

**Moderator:** **Kara Odom Walker, MD**  
Executive Vice President & Chief Population Health Officer,  
Nemours

**Panelist:** **Dora Hughes, MD**  
Chief Medical Officer, CMMI

**Roger Montgomery, MD**  
Executive Medical Director, Cherokee Nation Health



**Dr. Kara Odom Walker, MD, MPH, MSHS**  
Executive Vice President & Chief Population Health Officer,  
Nemours

Dr. Kara Odom Walker is Executive Vice President and Chief Population Health Officer for Nemours Children's Health System. She leads Delaware Valley Primary Care, the Value Based Services Organization and the Nemours National Office of Policy and Prevention. A highly accomplished executive, family physician and scientist, she has focused her career on transforming health care delivery to achieve optimal health and health equity. She has led efforts that address critical social determinants through her career in academia, patient centered outcomes research funding, state government and health systems. Dr. Walker joined Nemours following public service to the State of Delaware as the Secretary of the Delaware Department of Health and Services (DHSS) and served in Governor Carney's first elected term from February 2017 through 2020. Prior to her leadership in Delaware, Dr. Walker served as Deputy Chief Science Officer at the Patient Centered Outcomes Research Institute and was on faculty at the University of California-San Francisco in the Department of Family and Community Medicine. Dr. Walker is a board-certified family physician and holds

an MD from Thomas Jefferson University, a Master of Science in Health Sciences with a specialization in research from UCLA, and a Master of Public Health from Johns Hopkins University.



**Dora L. Hughes, M.D., M.P.H.**  
Chief Medical Officer, CMS Innovation Center at the Centers for  
Medicare & Medicaid Services

Bio: Dora Hughes, M.D., M.P.H., is Chief Medical Officer at the CMS Innovation Center at the Centers for Medicare & Medicaid Services. She leads the Center's work on health equity, provides clinical input on models, liaises with stakeholder groups, and directs CMMI's clinician community.

Previously, Dr. Hughes served as an Associate Research Professor of Health Policy & Management at George Washington University, where her work focused on the intersection of clinical and community health, health equity, healthcare quality and workforce. Prior to this role, Dr. Hughes was a Senior Policy Advisor at Sidley Austin, where she advised on regulatory and legislative matters in the life science industry. Additionally, Dr. Hughes served as the Counselor for Science & Public Health at the U.S. Department of Health & Human Services in the Obama Administration, helping to implement the Affordable Care Act and providing guidance to the Public Health Service Act authorized agencies and Food and Drug Administration.

Dr. Hughes began her career in health policy as Senior Program Officer at the Commonwealth Fund, and subsequently was Deputy Director for the HELP Committee for the late Senator Edward M. Kennedy and Health Policy Advisor to former Senator Barack Obama.

Dr. Hughes received a B.S. from Washington University, M.D. from Vanderbilt and M.P.H. from Harvard. She completed an internal medicine residency at Brigham & Women's Hospital.



**Roger Montgomery, MD**  
Executive Medical Director, Cherokee Nation Health

Bio: Dr. Roger C. Montgomery, MD, serves as the Executive Medical Director for Cherokee Nation under the leadership of Chief Chuck Hoskin, Jr. The Cherokee Nation Health System is a comprehensive health system that consists of a sixty bed in-patient hospital, nine out-patient facilities, adolescent treatment center, emergency medical services, behavioral health services, and numerous community health and prevention programs. Cherokee Nation Health System is the largest tribally operated health care system in the United States with over 1 million patient visits annually.

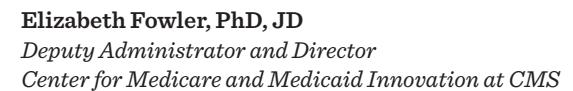
As Executive Medical Director of Cherokee Nation Health Services, Dr. Montgomery oversees all clinical services across the 14 county Tribal

Dr. Montgomery, a Cherokee Citizen, graduated from Northeastern State University, Tahlequah, Oklahoma in December 1980. He attended medical school at Harvard Medical School, Boston, Massachusetts, graduating in June 1985. Dr. Montgomery completed his internship and residency in Internal Medicine at Boston City Hospital and has served as an Adjunct Professor at the University of Arkansas for Medical Sciences. He is Board Certified in Internal Medicine and holds licensure in both Arkansas and Oklahoma.



Wednesday May 25th, 4:15pm-5:00pm ET

**Moderator:** *Sean Cavanaugh*  
Chief Administrative and Performance Officer, Aledade



10 | PrimaryCare22: See the Possibilities

where her research focused on risk adjustment, and a law degree (J.D.) from the University of Minnesota. She is admitted to the bar in Maryland, the District of Columbia, and the U.S. Supreme Court. Dr. Fowler is a Fellow of the inaugural class of the Aspen Health Innovators Fellowship and a member of the Aspen Global Leadership Network.



**Sean Cavanaugh**  
*Chief Administrative and Performance Officer, Aledade*

Sean Cavanaugh is Aledade’s Chief Policy Officer and Chief Commercial Officer. Sean has previously served as the Deputy Administrator and Director of the Center for Medicare at the Centers for Medicare & Medicaid Services. He was responsible for overseeing the regulation and payment of Medicare fee-for-service providers, privately-administered Medicare health plans, and the Medicare prescription drug program. Previously Sean was the Deputy Director for Programs and Policy in the Center for Medicare and Medicaid Innovation, where he was responsible for overseeing the development and testing of new payment and service delivery models, including ACOs and medical homes. Prior to that, Sean was Director of Health Care Finance at the United Hospital Fund. He has also served in senior positions at Lutheran Healthcare, the New York City Mayor’s Office of Health Insurance Access, and the Maryland Health Services Cost Review Commission. He attended the University of Pennsylvania and the Johns Hopkins School of Hygiene and Public Health.

NOTES



Session 5:  
Thursday May 26th, 10:00am-10:55am ET  
Primary Care Behavioral Health Integration Panel

- Moderator: **Kristen Ratcliff McGovern**  
Partner, Sirona Strategies
- Panelist: **Lisa Harootunian, JD, MSW**  
BPC Health Director, Bipartisan Policy Center
- Adam Myers, MD**  
Blue Cross Blue Shield Association
- Faisel Syed, MD**  
National Director of Primary Care, ChenMed



**Kristen Ratcliff McGovern**  
*Partner, Sirona Strategies*

Kristen McGovern has been at the forefront of federal health care policy and politics for more than a decade. As a partner at Sirona Strategies, she works with senior corporate executives to develop integrated business, advocacy and communications strategies that reflect complex health care policies and regulations. She regularly advises clients on a range of topics including commercial insurance markets, Medicare, accountable care organizations, new payment and delivery models, digital health, behavioral health, transparency initiatives and more. She is also Executive Director of the Partnership to Empower Physician-Led Care (PEPC), an advocacy coalition dedicated to support independent practices and physicians in moving to value-based care. Kristen serves as Executive Director of the Alliance for Innovative Primary Care (AIPC) which focuses on advocacy related to total cost of care payment



Prior to launching Sirona Strategies, Kristen served as Chief of Staff to the National Coordinator for Health IT at HHS, and also worked at the Office of Management and Budget in the Executive Office of the President.



Harootunian holds a Juris Doctor from the University of Richmond School of Law, a Master of Social Work from Virginia Commonwealth University, and a Bachelor of Science in Psychology from James Madison University. She is also a member of the Virginia State Bar



a certified professional in healthcare risk management. He is past chair of the American Hospital Association board-level Committee for Clinical Leadership and held board positions at the Health Care Transformation Task Force and The Joint Commission.



Dr. Syed joined the Dedicated family because “I have such respect and admiration for our seniors who have made America the great country it is today. I enjoy practicing natural medicine with a focus on improving behaviors for better health.”



## Session 6:

Thursday May 26th, 11:00am-11:55am ET

### Building the Primary Care Workforce

**Keynote:** **Candice Chen, MD**  
Associate Professor, The George Washington University Milken Institute School of Public Health

**Moderator:** **Stephanie Quinn**  
Senior Vice President, Advocacy, Practice Advancement and Policy, American Academy of Family Physicians



**Stephanie Quinn**  
Senior Vice President, Advocacy, Practice Advancement and Policy  
American Academy of Family Physicians

Stephanie Quinn, serves as senior vice president, advocacy, practice advancement and policy. She oversees the AAFP Divisions of Government Relations and Practice Advancement as well as the Robert Graham Center for Policy Studies in Family Medicine and Primary Care. She directs legislative and private sector advocacy on issues such as value-based models of care and increasing health care access.

Prior to joining the AAFP in 2019, Quinn served more than 15 years of government relations and legislative experience in the health care industry, including with the AAFP, American Society of Radiation Oncology, and various Blue Cross Blue Shield organizations.



**Candice Chen, MD**  
Associate Professor, The George Washington Univ. Milken Institute School of Public Health

Dr. Candice Chen is an Associate Professor of Health Policy & Management at the Fitzhugh Mullan Institute for Health Workforce Equity in the Milken Institute School of Public Health at the George Washington University. Dr. Chen is a health workforce researcher and educator whose work focuses on the role of the health workforce in addressing health equity. Health workforce equity emphasizes the need for diversity, social mission in health professions education, distribution of the workforce, service to high need patients, practice oriented to the root cause of health disparities, and safe and fair working conditions. Dr. Chen has developed and applied metrics to health professions education outcomes in primary care, practice in underserved communities, service to Medicaid populations, and diversity; evaluated community-based residency training; and examined the role of the health workforce in access for rural and underserved communities.

Dr. Chen was previously the Director of the Division of Medicine and Dentistry in the Bureau of Health Workforce at HRSA, where she led the development and administration of grant programs to strengthen primary care and improve access for underserved communities. Dr. Chen is also a board-certified pediatrician and continues to practice as a primary care pediatrician in Southeast Washington, DC. She received her medical degree from Baylor College of Medicine and her Master of Public Health from the George Washington University with a concentration in Community Oriented Primary Care.

#### NOTES

---

---

---

---

---

---

---

---

---

---



## Session 7:

Thursday May 26th, 1:00pm-3:00pm ET

### Primary Care Innovation Showcase

#### PART 1

### Public Programs

**Moderator:** **Shari Erickson, MPH**  
Chief Advocacy Officer and Senior Vice President,  
American College of Physicians

**Panelists:** **Kameron Leigh Matthews, MD, JD, FAAFP**  
Chief Health Officer of Cityblock Health  
**Greg Gierer, MPP**  
Vice President of Policy and Research, Better Medicare Alliance



**Shari M. Erickson, MPH**  
Chief Advocacy Officer and Senior Vice President of Governmental  
Affairs and Public Policy  
American College of Physicians (ACP)

Ms. Erickson currently serves as Chief Advocacy Officer and Senior Vice President of Governmental Affairs and Public Policy with the American College of Physicians (ACP). In this role, Ms. Erickson oversees the operations of the Washington, DC office and manages ACP's overall advocacy and policy initiatives relating to Congress and federal regulatory agencies, including the Department of Health and Human Services (HHS), Centers for Medicare and Medicaid Services (CMS), CMS' Center for Medicare and Medicaid Innovation (CMMI), and other federal bodies. Ms. Erickson also oversees ACP's Department of Medical

Practice, which is responsible for the ongoing development and maintenance of programs, products, tools, and services to assist medical practices with regulatory compliance and practice transformation. In addition, Ms. Erickson currently serves as Co-Chair of the Primary Care Collaborative's (PCC) Public Policy and Advocacy Workgroup.

Before coming to ACP, Ms. Erickson was a Senior Program Director with the National Quality Forum (NQF) in Washington, D.C. where she was responsible for managing an array of projects that support NQF's national strategy for health care quality measurement and reporting.

Ms. Erickson received her Master of Public Health degree from the Johns Hopkins Bloomberg School of Public Health and her Bachelor of Arts and Bachelor of Arts-International Studies degrees from Miami University in Ohio.



**Kameron Leigh Matthews, MD, JD, FAAFP**  
Chief Health Officer  
Cityblock Health

Dr. Kameron Leigh Matthews is the Chief Health Officer of Cityblock Health, a transformative, value-based healthcare provider integrating medical, behavioral, and social services for Medicaid and dually eligible and low-income Medicare beneficiaries. A board-certified Family Physician, Dr. Matthews has focused her career on underserved and vulnerable communities, having held multiple leadership roles in correctional medicine, federally qualified health centers, and managed care. Most recently at the Veterans Health Administration, she led transformational efforts focused on integrated, Veteran-centered models of care including the implementation of the MISSION Act of 2018 and the EHR modernization effort. In addition to other non-profit and advisory board positions, she serves as the Vice-Chair of the board of directors of the National Quality Forum. As a passion outside of work, she co-founded and co-direct the Tour for Diversity in Medicine, an initiative seeking to bring premedical enrichment activities to underrepresented minority high school and undergraduate students across the country.



**Greg Gierer, MPP**  
Vice President of Policy and Research  
Better Medicare Alliance

Greg Gierer, MPP, joined Better Medicare Alliance as Vice President of Policy and Research in September 2021, bringing nearly 25 years of public policy and advocacy expertise to the role. His post at Better Medicare Alliance follows leadership roles with some of the nation's leading health care associations, including Pharmaceutical Research and Manufacturers of America (PhRMA) and the Blue Cross Blue Shield Association. Greg most recently served as Senior Vice President for Policy at America's Health Insurance Plans (AHIP). He began his

career on Capitol Hill as an aide to U.S. Senator Christopher Dodd (D-CT). Greg is a graduate of Providence College and holds a Master of Public Policy from Georgetown University's McCourt School of Public Policy. He also serves on the Cancer Support Community's Cancer Policy Institute Advisory Board. A Connecticut native, Greg resides in Leesburg, Virginia with his wife, and three children.

---

## PART 2

# Community Health Centers

**Moderator:** **Joe Dunn**

*Senior Vice President, Public Policy and Research, National Association of Community Health Centers*

**Panelists:** **Sonya Bruton, PsyD, MPA**

*CEO and President, CCI Health Services*

**Nancy Johnson, RN, PhD**

*CEO, El Rio Community Health Center*



**Joe Dunn**

*Senior Vice President, Public Policy and Research, National Association of Community Health Centers*

Joe Dunn, NACHC is a two-time graduate of the George Washington University. Joe has spent the last twenty years in Washington, DC, on Capitol Hill and in various government relations roles. Joe joined NACHC in January 2021 as Senior Vice President for Public Policy and Research from Cigna. Before this, he was in senior positions with three offices on Capitol Hill, with the majority of that time with Senator Chris Murphy. Joe began his work on behalf of the people of Connecticut in 2010 when he joined then-Representative Chris Murphy as his Legislative Director. In 2012, when Congressman Murphy was elected to the Senate, Joe transitioned to being his Senior Policy Advisor covering health care issues. He also served as Chief of Staff to a freshman Democratic Representative.



**Sonya Bruton, PsyD, MPA**

*CEO and President, CCI Health Services*

Sonya Bruton PsyD, MPA is the CEO and President of CCI Health Services and a licensed clinical psychologist. CCI, incorporated in 1972, is a Federally Qualified Health Center (FQHC) that serves 78,400 medical, dental, behavioral health and Women Infants and Children (WIC) participants through 12 delivery sites throughout Montgomery and Prince George's Counties.

Dr. Bruton has spent twenty-five years in public health, increasing access and improving health outcomes through health equity. She has previous careers and a successful track record in fundraising, philanthropy, strategic innovation and community economic development. Dr. Bruton served as an adjunct professor at the graduate education level in Public Administration and speaks regularly on health equity and addressing the social determinants of health in primary care.

Dr. Bruton holds an undergraduate degree in journalism from the University of North Carolina at Chapel Hill, a master's degree in Public Administration from North Carolina State University and a master's degree and Doctorate in Clinical Psychology from the Chicago School of Professional Psychology. She was named a 2021 Health Care Hero by The Daily Record.



**Nancy Johnson RN, PhD**

*CEO, El Rio Community Health Center*

Nancy Johnson, RN, PhD is the Chief Executive Officer for El Rio Community Health Center, one of the largest federally qualified health centers in the country. She is a registered nurse graduating with a BSN from Illinois Wesleyan University. Dr Johnson also holds masters degrees in both nursing from the University of Illinois and a masters in marketing and business from the University of Arizona Eller College. Her doctoral research was on provider perspectives in caring for the uninsured population, leading to her completion of her PhD in Health Care Administration.

Nancy has held positions as a clinician, a faculty member in nursing, business, and medicine, as well as an administrator. She spent over 15 years with Tucson Medical Center, building community health and wellness programs, acquiring and managing medical practices for the TMC system, and expanding community networks. Today, in addition to her role as El Rio's CEO, she continues to serve as an adjunct clinical professor for the University of Arizona College of Medicine. She has authored a textbook with her husband, entitled "The Care of the Uninsured in America" and most recently, an article in Nursing Administration Quarterly on Healthcare for the Homeless. Dr Johnson is a recent recipient of the University of Arizona's Cecil B. Hart Humanitarian Award as well as the 2016 Distinguished Alumni Award from Illinois Wesleyan University. Dr Johnson was named Greater Tucson Leadership's Woman of the Year in 2021.

## Employer & Commerical Markets

**Moderator:** **Jeff Micklos**  
Executive Director, Health Care Transformation Task Force

**Panelists:** **Patrick Aguilar, MD**  
Chief Medical Officer, MedWise

**Bret Jackson**  
President, The Economic Alliance for Michigan

**Jenny Goins**  
President and CEO, Kentuckiana Health Collaborative



**Jeff Micklos**  
Executive Director, Health Care Transformation Task Force

Jeff Micklos is the Executive Director of the Health Care Transformation Task Force. An attorney by training, Jeff is the former Executive Vice President, Management, Compliance, & General Counsel of the Federation of American Hospitals, a national trade association representing investor-owned hospitals, and a former Partner in the Health Law Department of the international law firm of Foley & Lardner LLP. Mr. Micklos began his career as a litigator and regulatory counsel for the Health Care Financing Administration, U.S. Department of Health and Human Services, and also served in the Office of General Counsel of the Social Security Administration.

Jeff is a graduate of the Columbus School of Law, The Catholic University of America, and received a Bachelor Arts Degree from Villanova University.



**Patrick Aguilar, MD**  
Chief Medical Officer, MedWise & QuikTrip

Dr. Aguilar is the Chief Medical Officer for MedWise, a healthcare venture launched in 2020 by Tulsa-based QuikTrip. MedWise exists to use empathy as a path for improving the patient experience. Patrick's role at MedWise is to support teams that lead clinical strategy, regulatory compliance, clinical quality, provider recruitment/development, and revenue cycle operations. He also serves as CMO for QT QuikMed, a primary care enterprise that serves QuikTrip employees and

their families. By background, Patrick is a transplant pulmonologist and has served as Director of ECMO at Baylor University Medical Center in Dallas, Texas and Director of Medical Critical Care at Barnes Jewish Hospital/Washington University in St. Louis, Missouri. While at Washington University, Patrick also led the development of an Innovation Curriculum at the School of Medicine and a combined MD/MBA degree program.

Patrick earned his Doctorate of Medicine at the University of Texas Medical Branch and his Master of Business Administration at Washington University. He currently serves as a faculty member in the Department of Internal Medicine at Dell Medical School in the University of Texas at Austin.



**Bret Jackson**  
President, Economic Alliance for Michigan

Bret Jackson is the President of the Economic Alliance for Michigan. In its 40th year of serving Michigan, the Economic Alliance is a nationally recognized coalition of labor unions and employers that join together to improve the working and business climate in our state. Our members represent about 900,000 covered lives in Michigan. In his role, Bret leads all activities and operations including policy development, programming, research, events, and member engagement. Bret serves as the Policy Chair and Executive Committee of the National Alliance of Healthcare Purchaser Coalitions. He also is a member of the National Quality Forum Patient Safety Standing Committee.



**Jenny Goins**  
President and CEO, Kentuckiana Health Collaborative

Bio: Ms. Goins is responsible for leading, engaging, and aligning employers and healthcare stakeholders to collaborate on innovative, systemic improvements to health and healthcare delivery. She has over a decade leading Kentucky's largest self-insured health plan and is an experienced HR executive. Jenny is a retired Air Force Chief Master Sergeant whose career included duties in combat communications, journalism, personnel, and leadership development. She holds an bachelor's degree in organizational development and a master's degree in adult learning with a focus on distance learning from Tusculum College. Jenny is passionate about her family and research that underscores the impact of the brain on obesity and substance use disorders. She enjoys gardening and spending time with her husband and extended family at their small cattle farm.



Thursday May 26th, 3:15pm-4:00pm ET

**Keynote:** *Kyna Fong, PhD*  
CEO and Co-Founder, Elation Health



Kyna's expertise as a health economist and digital health leader has been featured in publications including Forbes and Fast Company and she is the recipient of several awards including Fierce Healthcare's 2021 Most Influential Minority Executives in Healthcare and The Top 100 Harvard Alumni In Technology Of 2021.



Primary Care for America

PrimaryCare22:  
***See the Possibilities***